

The UK Experience in Underwater Heritage Management

Christopher Pater (Head of Marine Planning – English Heritage)

Rory McNeary (Senior Inspector, Marine Historic Environment –
Department of the Environment Northern Ireland)

Philip Robertson (Deputy Head of Scheduling Marine and
Battlefields – Historic Scotland)

Polly Groom (Regional Inspector of Ancient Monuments - Cadw)

SeArch conference “Begraven & verdronken getuigen uit een ver Noordzee
verleden”

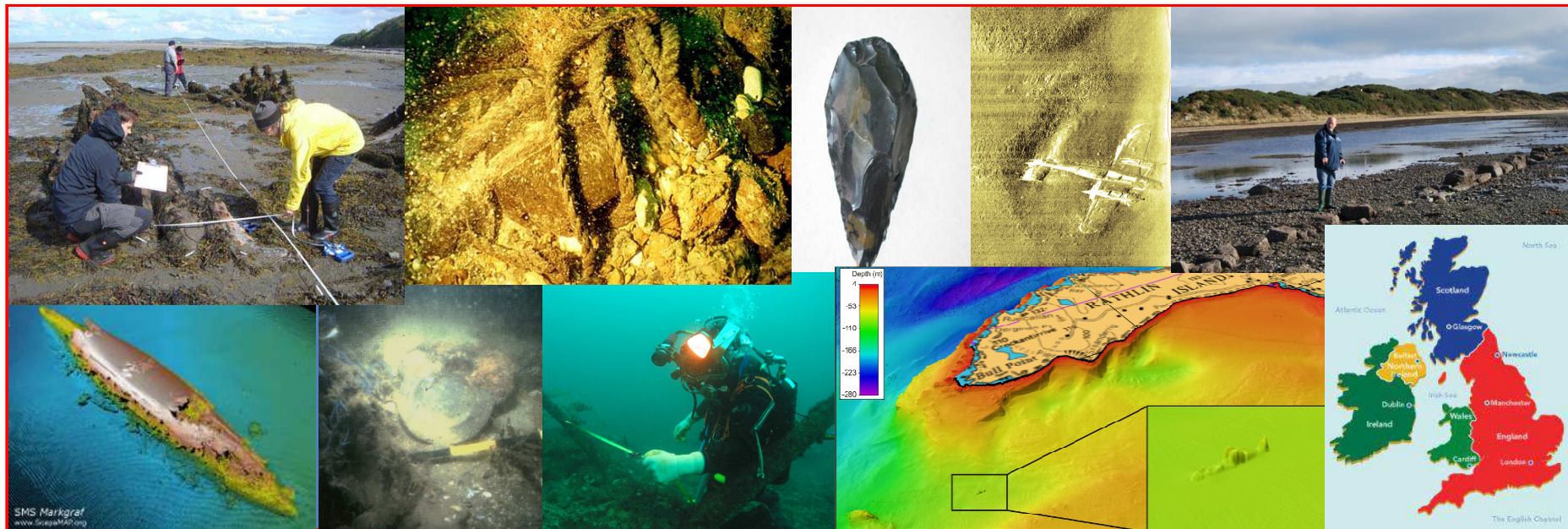
24th November 2014

Provinciaal Hof, Bruges (Belgium)

The Marine Historic Environment

“The United Kingdom’s seas represent a valuable facet of our cultural heritage. There are the thousands of shipwrecks and remains of aircraft that one might immediately think of, but there are also drowned prehistoric landscapes containing artefacts that are more than 8000 years old...”

Source: The House of Commons Environment, Food and Rural Affairs Committee Marine Environment. Sixth Report of Session 2003–2004



UK High Level Marine Objectives

published 2009

“...society getting more benefit from the use of the marine environment than previously, whilst its rich natural and **cultural heritage** are better protected...”

“We will be responding to this in our actions so that the integrity of marine ecosystems and **underwater cultural heritage** is conserved.”

“...management for the coastal zone will support sustainable development and the **cultural heritage** of coastal areas.”

“People appreciate the value of the marine environment, its natural and **cultural heritage** and its resources and act responsibly.”



Northern Ireland's underwater heritage



Northern Ireland
Executive

www.northernireland.gov.uk



DOE

Department of
the Environment
www.doeni.gov.uk



www.doeni.gov.uk/niea

Northern Ireland
Environment
Agency



centre for
maritime archaeology

- Management of underwater cultural heritage in Northern Ireland has been a devolved matter since 1992 and currently cuts across 2 government bodies: the Marine Environment Division (MED, DOE) and the Northern Ireland Environment Agency (NIEA, an Agency within the DOE).
- A DOE-sponsored contract unit based at the Centre for Maritime Archaeology (CMA), Ulster University, works in support of both Directorates, providing independent expert heritage advice and programmes of strategic research.
- These 3 groups work together to ensure underwater archaeological sites in NI are managed and protected through planning, licensing, formal designation, strategic investigation and the implementation of appropriate policy and guidance.
- Despite devolved responsibility there is considerable commonality in approach in line with the rest of the UK including cultural heritage featuring strongly in national planning policy and guidance (see PPS6) and a planning-based approach to the marine environment (inclusive of cultural heritage) has been formalised through marine legislation and policy.

Surveying & Recording



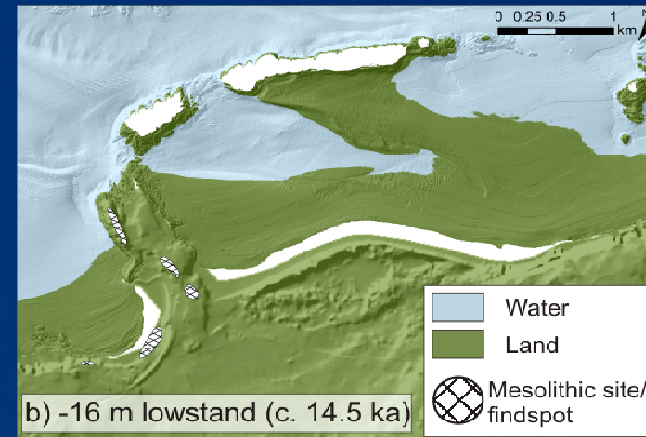
Northern Ireland
Executive
www.northernireland.gov.uk

NI EA Northern Ireland
Environment
Agency
www.doeni.gov.uk/niea

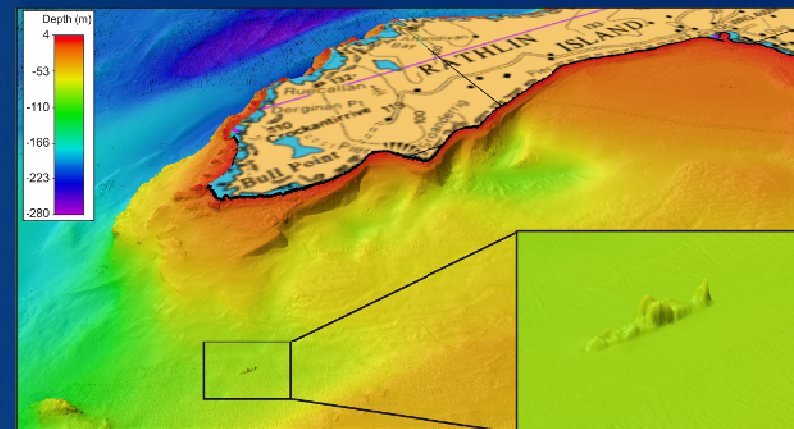
DOE
Department of
the Environment
www.doeni.gov.uk

centre for
maritime archaeology

- A NI shipwreck inventory curated by the CMA now has entries of over 2600 wreck sites;
- Research into submerged landscapes around NI established;
- Desk-based assessment of WWI shipwrecks as part of the current PWA contract underway (centenary of WW1);
- Maritime archaeological surveys completed for Strangford Lough and Rathlin Island;
- A riverine heritage gazetteer compiled for principal rivers in NI.



Palaeo-geographic reconstruction, Portrush (courtesy CMA)

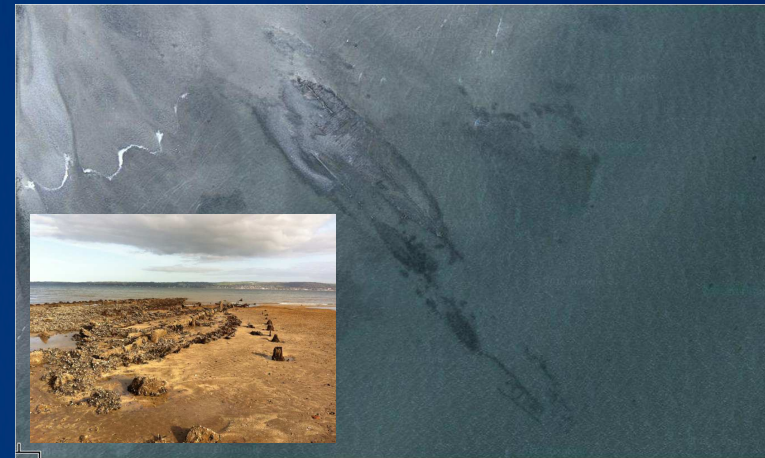


SS Lugano, a cargo steamer sunk in 1917 (courtesy CMA)

Some interesting discoveries



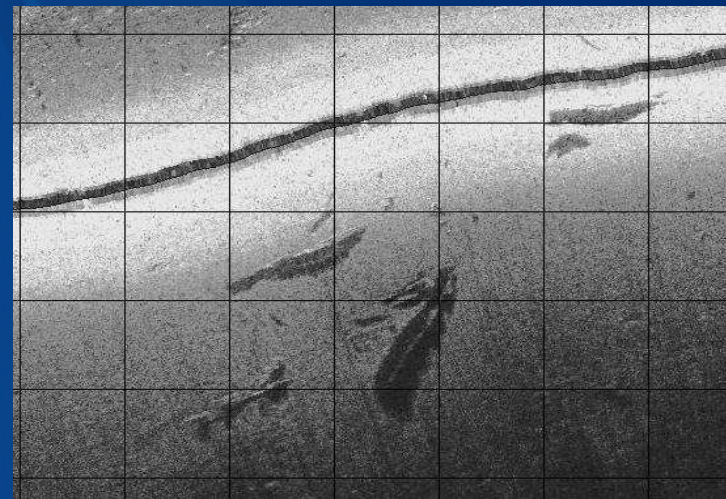
Sonar imagery of SS Santa Maria, lost 1918 (courtesy CMA)



Whiteabbey Bay hulks, Belfast Lough



Fish-trap, Dundrum Bay – pre-Scheduling survey

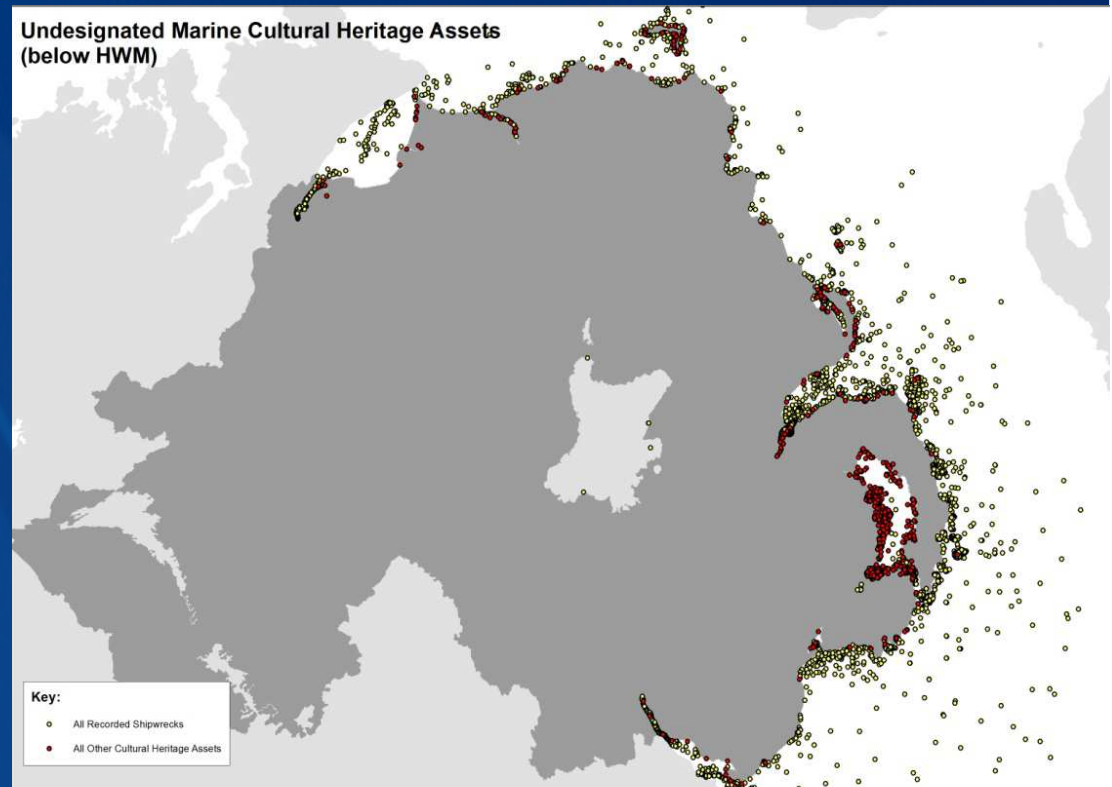


Sidescan sonar imagery of logboats, Coney Island, Lough Neagh

Protection & Conservation



- Underwater cultural heritage assets still primarily protected through designation under PWA 1973 and HMAO Order 1995.
- Protected freshwater sites include crannogs, canals and fish traps.
- Underwater heritage fully considered through terrestrial and marine planning systems (out to 12 miles offshore).
- Preliminary programme of coastal heritage at risk mapping completed.

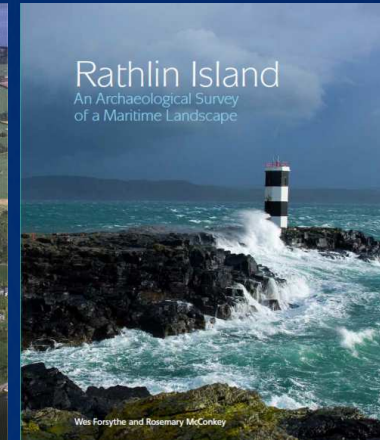
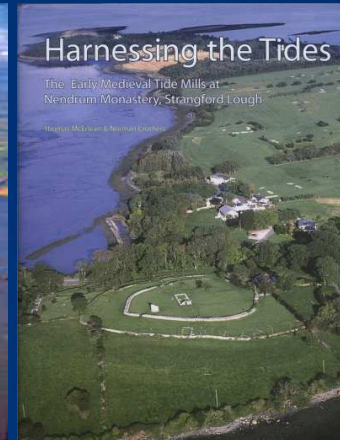
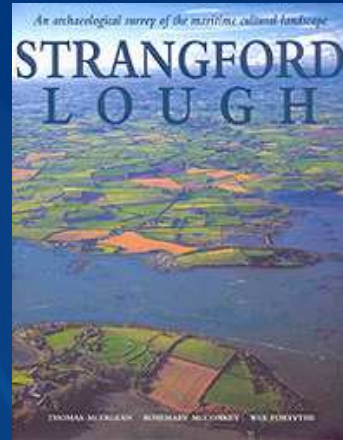


Northern Ireland has 3,677 undesignated cultural heritage assets below HWM.

Promotion & Information



- Public Lectures;
- Publications;
- Sponsoring academic research;
- Integrating archaeology & communities;
- Provision of guidance & information.



(courtesy CMA)

Scotland's underwater heritage



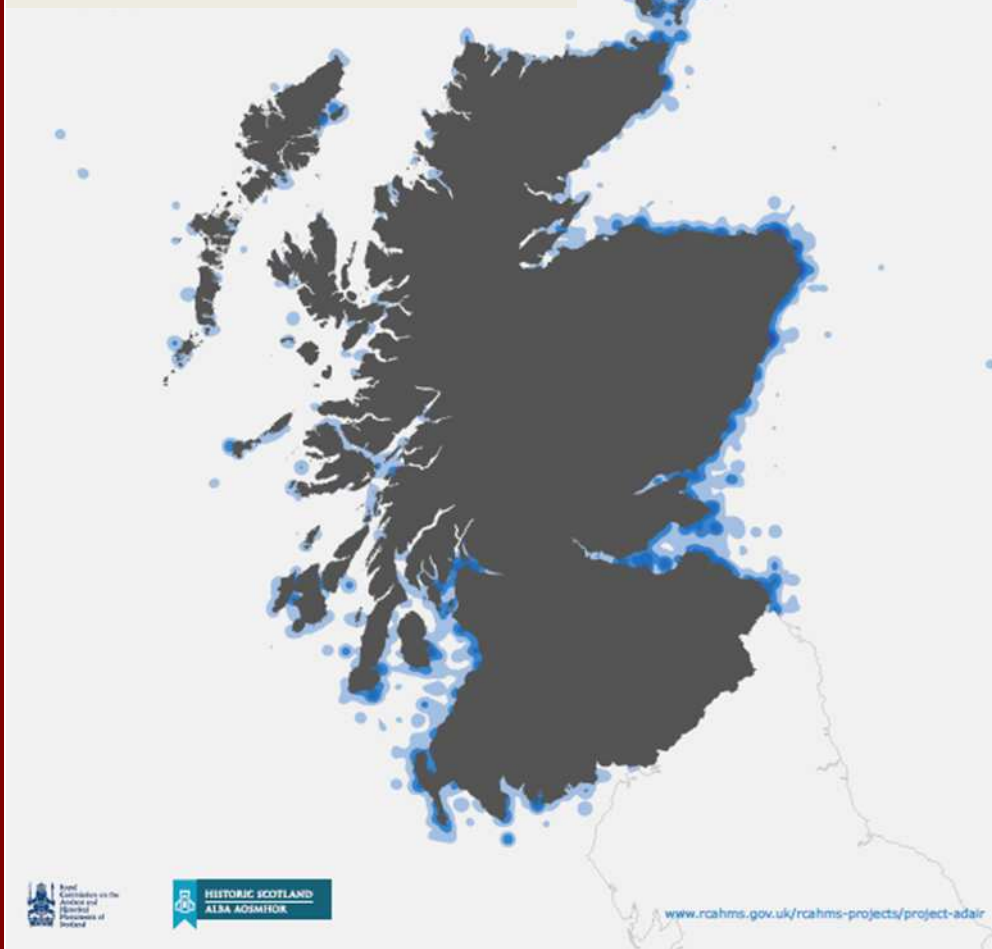
marinescotland

- Since 1992, devolved responsibilities administered by Historic Scotland (agency of Scottish Government) and RCAHMS (national body of survey).
- Historic Scotland and RCAHMS merge in October 2015 to form new lead body for historic environment – 'Historic Environment Scotland'
- HS/RCAHMS work closely with Marine Scotland – marine planning authority for Scotland's marine area, as well as Local Authority Archaeology Services.
- Underwater field capability provided by virtue of a marine archaeology contract shared with Wales and N.Ireland;
- HS supports a wide range of research and management work on marine/underwater archaeological sites

Investigating-recording

- RCAHMS Canmore online database now has entries of 4660 wreck sites
- Research underway into submerged landscapes around Orkney and Western Isles;
- Surveys of Scapa Flow wartime naval harbour (centenary of WW1);
- Monitoring and emergency intervention of sites affected by coastal erosion by SCAPE Trust;
- ‘Source to Sea’ project in the Clyde Estuary 2015-20;

Project Adair density map of wrecks and recorded losses around Scotland's coast



Some interesting discoveries



HISTORIC SCOTLAND
ALBA AOSMHOR

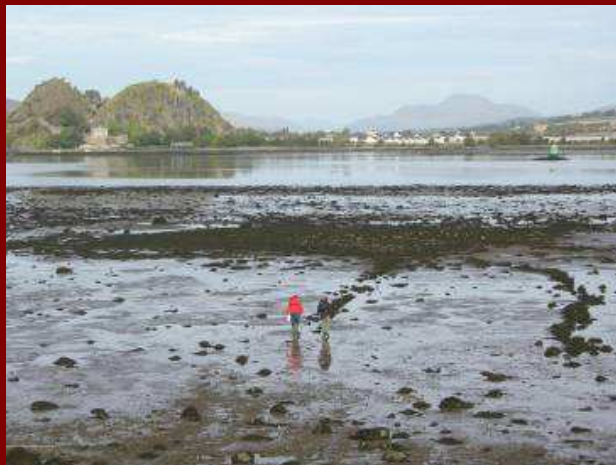
marinescotland



Survey of Norse/Medieval canal, harbour and boat building site, Isle of Skye (Courtesy Colin Martin)



Recovery of a Bronze Age logboat from the Tay Estuary, E Scotland (Courtesy Perth and Kinross Heritage Trust).



The Scheduling Team visit the site of an Iron Age marine 'crannog' on the Firth of Clyde



Sonar mapping – wrecks of German High Seas Fleet, scuttled Scapa Flow, Orkney, 1919.

Caring-protecting



HISTORIC SCOTLAND
ALBA AOSMHOR

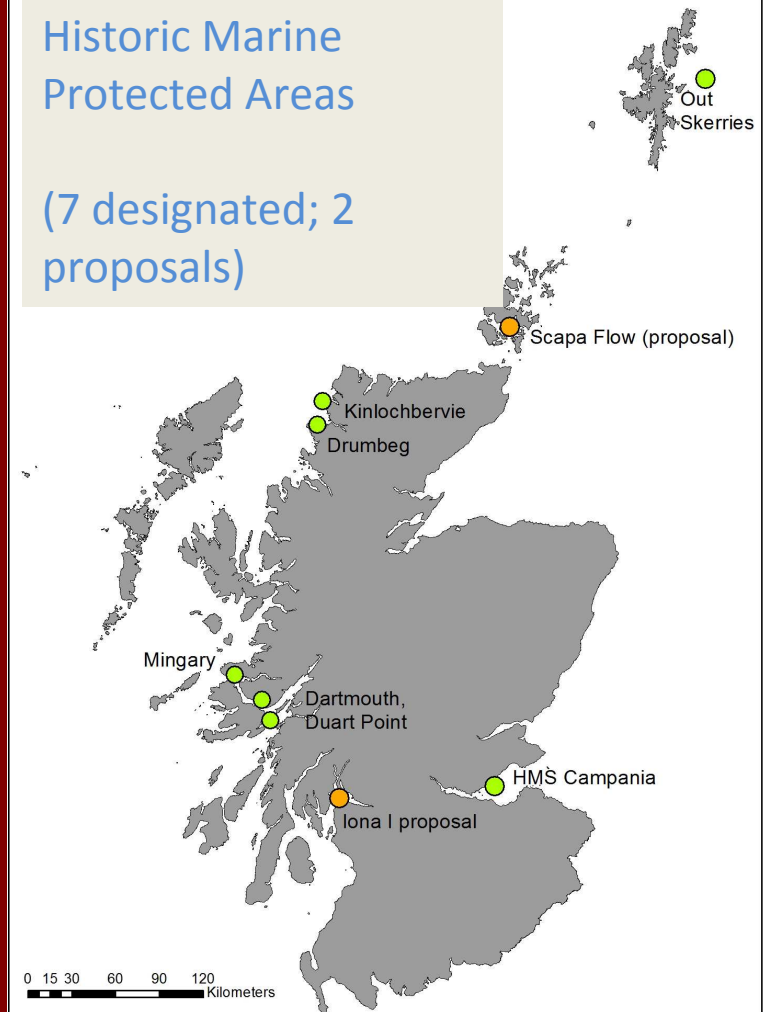
marinescotland

- Integrated protection of marine natural and cultural heritage through system of Marine Protected Areas;
- Protected freshwater sites include crannogs, duns (forts), canals.
- Underwater heritage fully considered through terrestrial and marine planning systems (out to 200 miles offshore).



Scotland's
Historic Marine
Protected Areas

(7 designated; 2
proposals)





The Scottish
Government



HISTORIC SCOTLAND
ALBA AOSMHOR

marinescotland

Sharing-celebrating

- Nautical Archaeology Society training scheme;
- SCAPE Trust – community involvement in the coastal zone
- Delivery of continuing professional development
- Support for archiving and publishing important archaeological work
- Provision of guidance and information



The Colin Martin
Archive – see
www.rcahms.gov

[.uk](http://www.rcahms.gov.uk)



SCAPE Trust – see
www.scapetrust.org

- **Cadw is a Welsh word meaning ‘to keep’**
- **Cadw is part of the Welsh Government, charged with conserving, protecting and promoting the historic environment of Wales**
- **We have responsibility for the historic environment within Welsh territorial waters**
- **To look after this, we work closely with the Royal Commission on the Ancient and Historic Environment of Wales and the four regional Archaeological Trusts**
- **We also work with Natural Resources Wales, who have responsibility for marine licensing. We provide historic environment advice to them**
- **Underwater fieldwork services are currently provided through a contract shared with Scotland and N Ireland**



Llywodraeth Cymru
Welsh Government

www.cymru.gov.uk

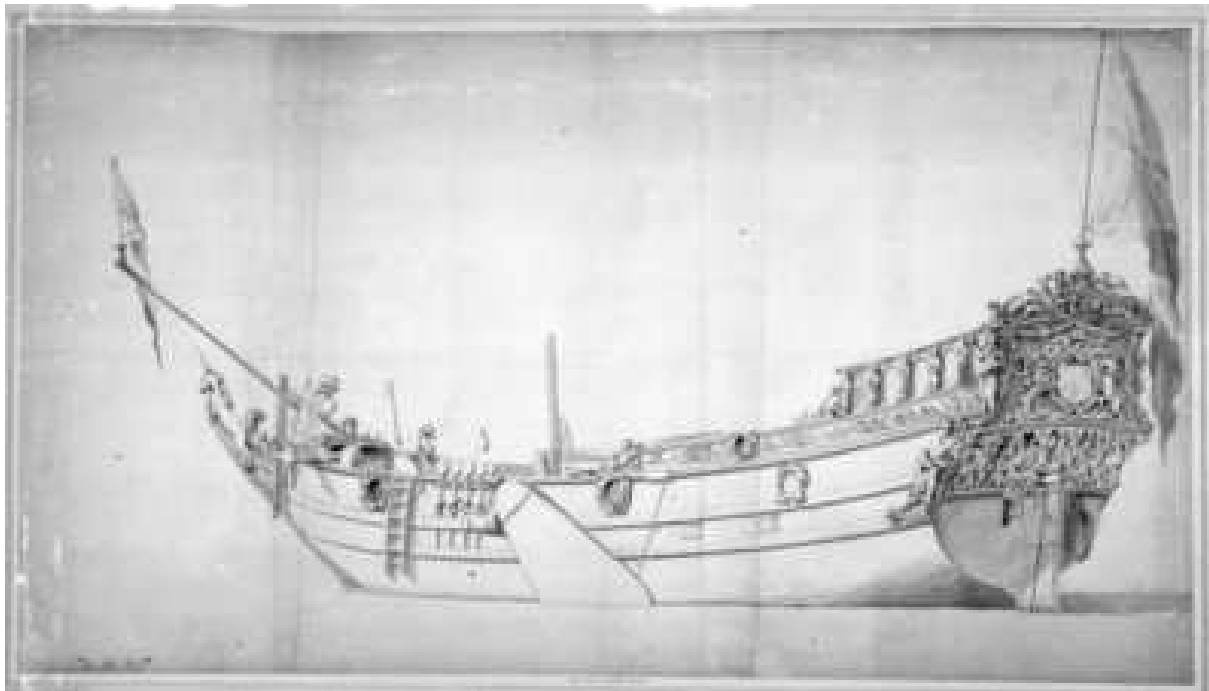
 **Cadw**

- **Wales only has 6 designated wrecks – but we have thousands of undesignated wreck sites. Records are maintained by the RCAHMW, and many are available online through www.coflein.gov.uk**
- **Terrestrial, coastal and intertidal sites records are held by the regional Trusts, and all are available through www.archwilio.org**



Llywodraeth Cymru
Welsh Government

www.cymru.gov.uk



 Cadw

Cadw funds the Nautical Archaeological Society to run training courses, give talks and set up events in Wales, to encourage people to get involved and to increase skill levels.



Llywodraeth Cymru
Welsh Government

www.cymru.gov.uk



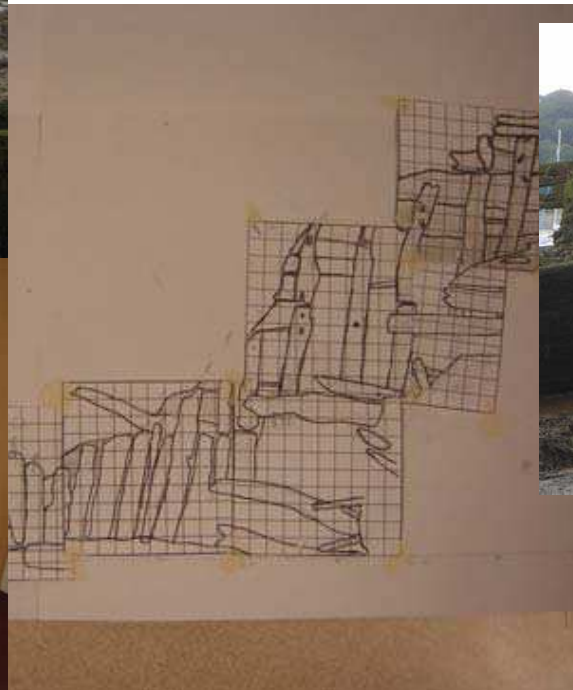
 **Cadw**

For the last 5 years, Cadw have funded 'Arfordir' – a community project using volunteers to identify and record archaeological sites suffering from coastal erosion. Hundreds of 'new' sites have been added to the record, and project participants



Llywodraeth Cymru
Welsh Government

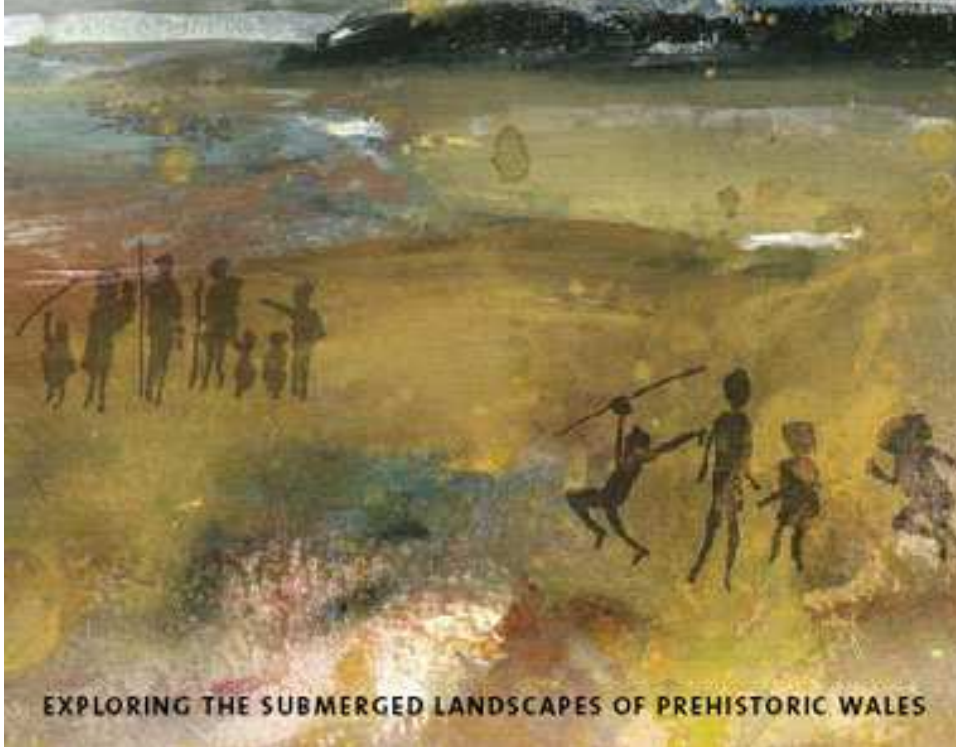
www.cymru.gov.uk



 Cadw

ARCHWILIO TIRWEDDAU CYNHANESYDDOL CYMRU A FODDWYD

Tiroedd coll ein cyndadau The lost lands of our ancestors



EXPLORING THE SUBMERGED LANDSCAPES OF PREHISTORIC WALES



Llywodraeth Cymru
Welsh Government

www.cymru.gov.uk

“Lost Lands” was a major underwater mapping project, carried out in 2011-12. Information is available via www.dyfedarchaeology.org.uk and click on ‘projects’

Outputs included a popular booklet, educational resources and mapping of archaeological potential. This is now feeding into marine planning.

 Cadw

Marine Historic Records - England

www.pastscape.org.uk Information on England's archaeology and architecture

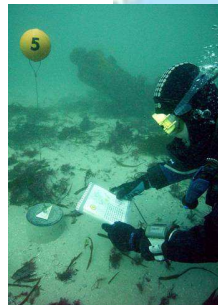
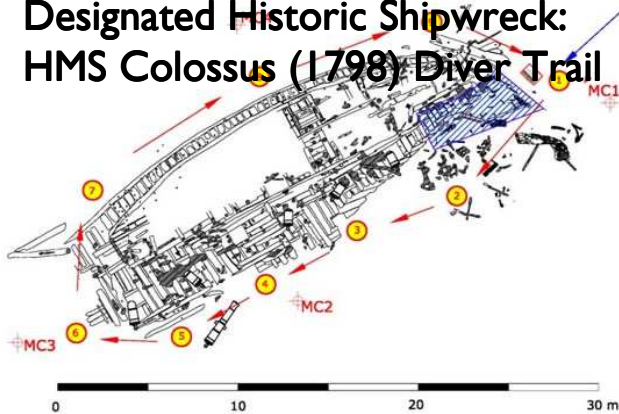
Maritime records (total): 46,000
Wrecks: 33,000
Casualties, position to be verified: 27,400
Wrecks position known: 5,200
Designated Historic Shipwrecks (England): 46 (UK total = 61)
British aircraft: 1,100
Fishermen's fastenings: 7,400
Isolated finds etc: 1,300

Most records are "named locations" – loss of vessel recorded, but no known location

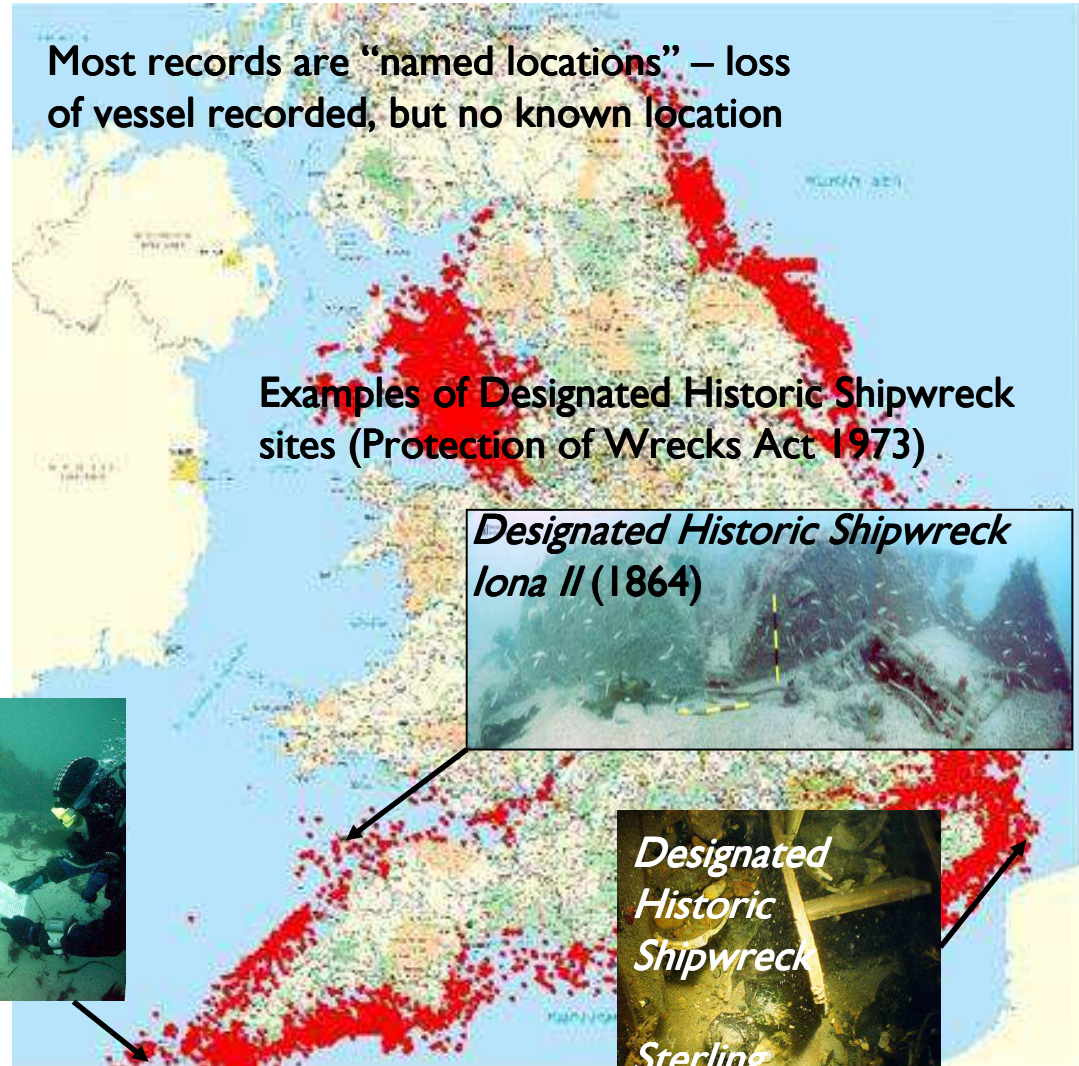
Examples of Designated Historic Shipwreck sites (Protection of Wrecks Act 1973)

*Designated Historic Shipwreck
Iona II (1864)*

Designated Historic Shipwreck:
HMS Colossus (1798) Diver Trail



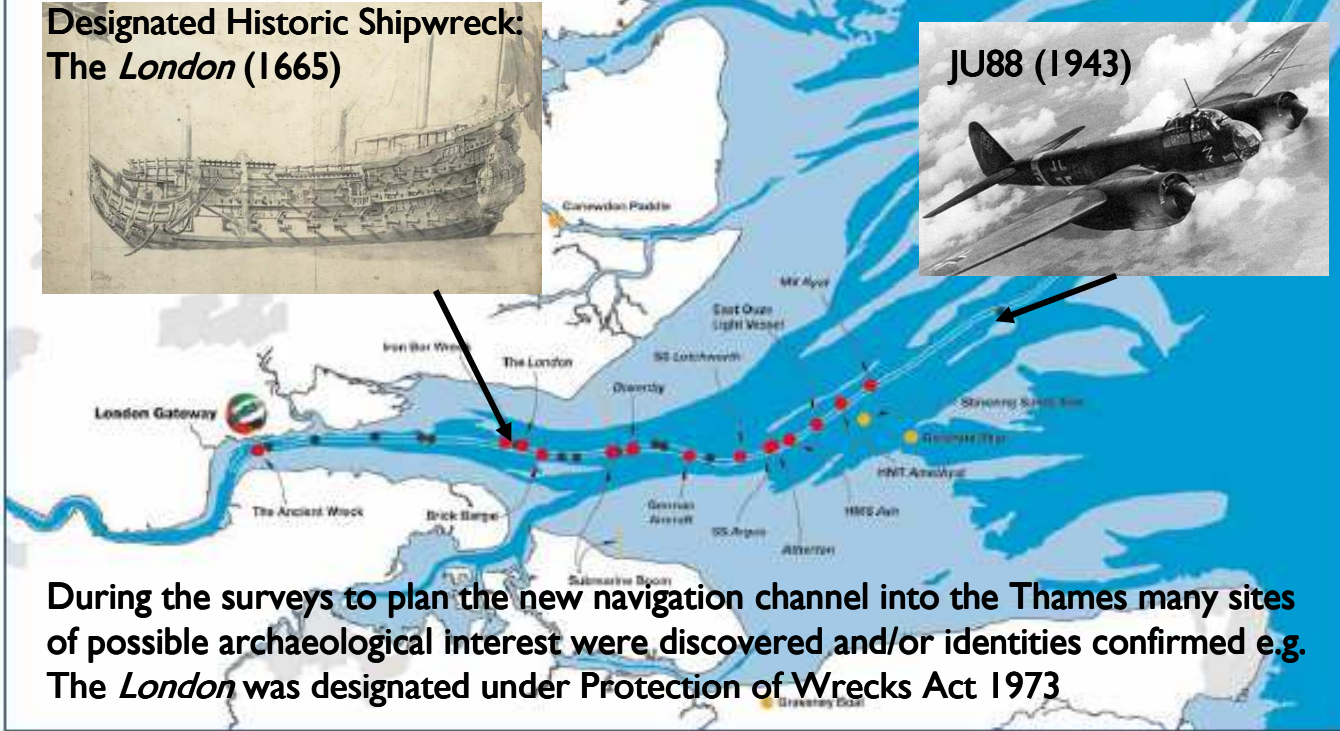
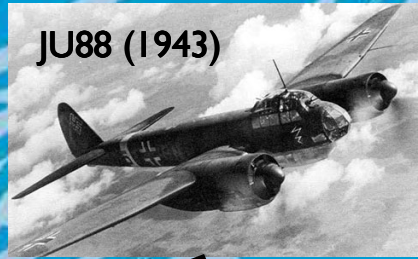
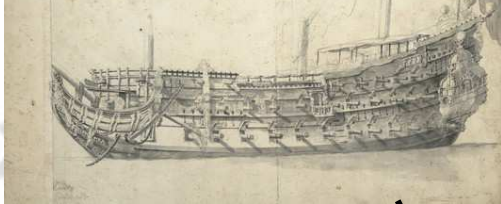
*Designated
Historic
Shipwreck
Sterling
Castle 1703*



- Sites in the survey investigated for London Gateway
- Other sites in the London Gateway
- Other sites investigated for London Gateway
- Navigational Channel for London Gateway

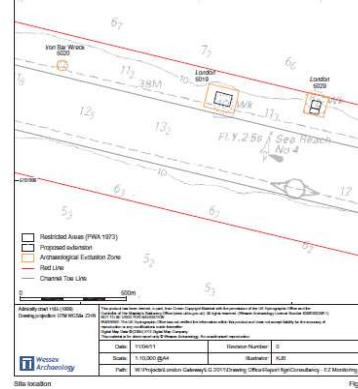
Advice was provided by English Heritage throughout delivery of the London Gateway Port development

Designated Historic Shipwreck: The *London* (1665)

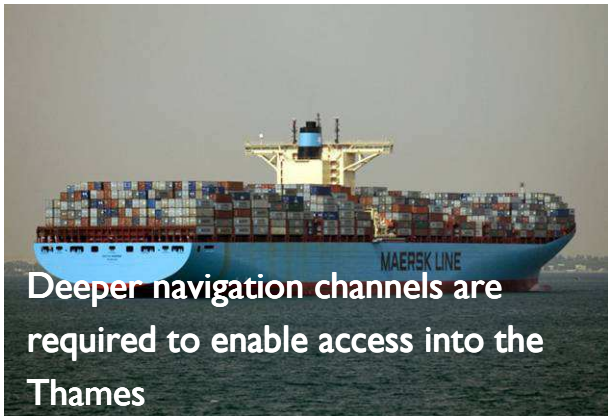


During the surveys to plan the new navigation channel into the Thames many sites of possible archaeological interest were discovered and/or identities confirmed e.g. The *London* was designated under Protection of Wrecks Act 1973

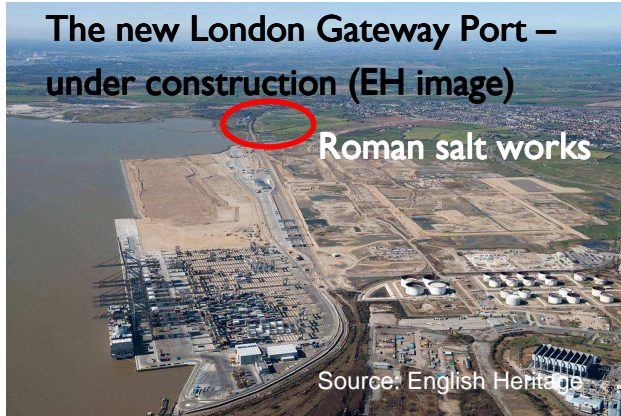
Plans were agreed to avoid the wreck of the *London*



Archaeological diver surveys were conducted on the *London*

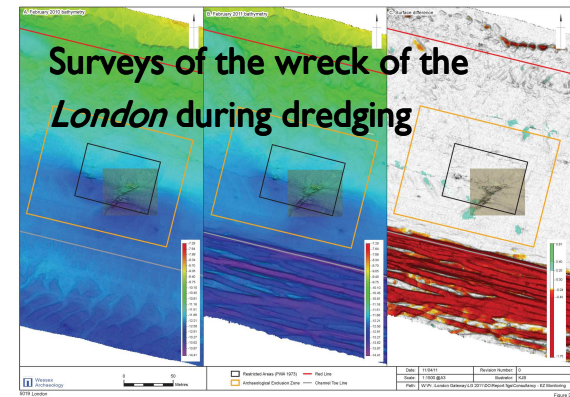


Deeper navigation channels are required to enable access into the Thames



The new London Gateway Port – under construction (EH image)
Roman salt works

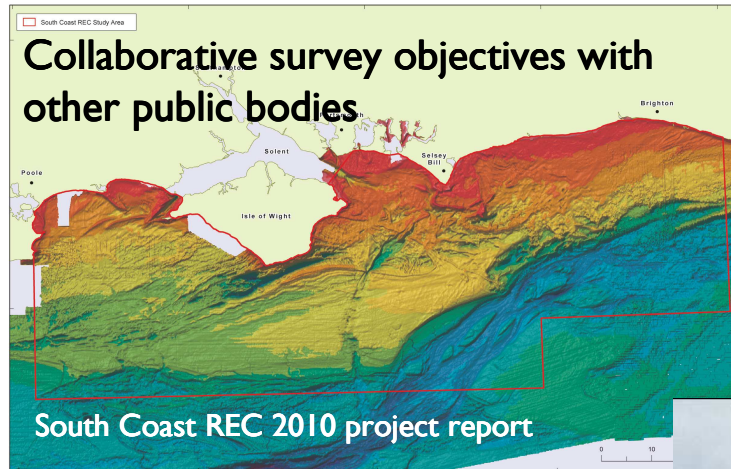
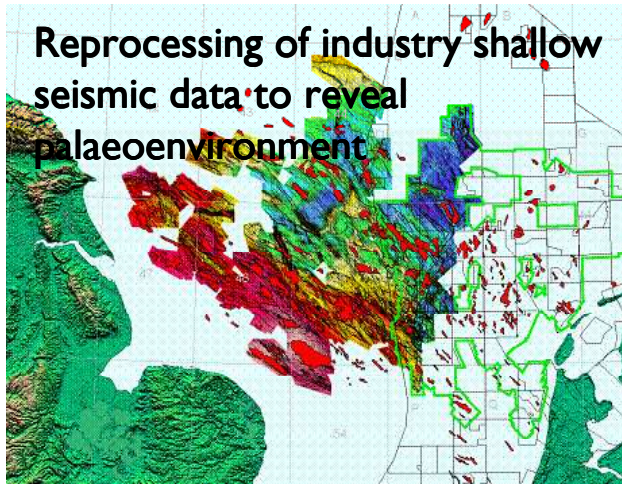
Source: English Heritage



Surveys of the wreck of the *London* during dredging

Figure 2

English Heritage: Research, Advice & other projects to develop knowledge



What have you found?

What you discover helps us to find out about the past. It helps us to protect important sites. It allows us to show people the richness of our marine historic environment.

- Flint
- Stone
- Pottery
- Metal wreckage
- Ship timbers
- Tusks/teeth
- Bone

If you find something that you think might be of archaeological or historical interest, please report it to your Site Champion.

Your Site Champion is:

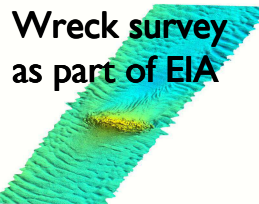
Protocol for reporting finds of archaeological interest
British Marine Aggregate Producers Association and English Heritage

Prepared by
Wessex Archaeology

Marine Licensing and England's Historic Environment

Advice for projects directed at historic environment (non-designated & designated) that requires marine licence under Marine & Coastal Access Act 2009

ENGLISH HERITAGE



Reporting protocols with seabed developers

Thank You!

Rory McNeary (Senior Inspector, Marine Historic Environment – Department of the Environment Northern Ireland)

Philip Robertson (Deputy Head of Scheduling Marine and Battlefields – Historic Scotland)

Polly Groom (Regional Inspector of Ancient Monuments Cadw)

Christopher Pater (Head of Marine Planning – English Heritage): chris.pater@english-heritage.org.uk